



LG Hausys HEADQUARTER One IFC 10 Gukjegeumyung-ro, Yeouido-Dong, Yeongdeungpo-Gu, Seoul 150-876, Korea Tel +82-2-6930-0965 Fax +82-2-6930-0901

GLOBAL NETWORK

LG Hausys America, Inc. - ATLANTA
900 Circle 75 Pkwy Suite 1500, Atlanta, USA, GA 30339
TEL : 1-678-535-4117

LG Hausys Trading Co. Ltd. - SHANGHAI
19F Magnolia Plaza No.777 Hongqiao Road, Xuhai District, Shanghai,
China, 200030
TEL : 86-21-5241-6600

LG Hausys Europe GMBH - FRANKFURT
Lyoner str. 15, Altncom C6, D/60528 Frankfurt am main, Germany
TEL : 49-69-5830-29420

LG Hausys Russia, LLC - MOSCOW
Lesnaya Plaza, 8th Floor, 4-4th Lesnaya Pereulok, Moscow, 125047, Russia
TEL : 7-495-653-3958

LG Hausys India Private Ltd. - GURGAON
Plot #11 Sector 44 Gurgaon Haryana - 122001, India
TEL : 91-124-421-2590

LG Hausys, Ltd. TAIPEI OFFICE - TAIPEI
2F, NO. 89, Sec. 2, Tiding Ave., Taipei 11493, Taiwan
TEL : 886-2-2658-6370

<http://www.lghausys.com/eng/product/interior/film/index.jsp>

LG Hausys, Ltd. ISTANBUL OFFICE - ISTANBUL
Büyükdere cad. Maslak Nurof Plaza No : 255A Blok B Kat 34398 Maslak,
Istanbul, Turkey
TEL : 90-212-285-1101

LG Hausys, Ltd. TOKYO OFFICE - TOKYO
Kyobashi Trust Tower 14F, 2-1-3 Kyobashi, Chuoh-ku, Tokyo, 104-0031, Japan
TEL : 81-3-5299-4537

LG Hausys, Ltd. JAKARTA OFFICE - JAKARTA
Tower One at The City Center (TCC) Batavia 18th Floor, Unit 2B
KH. Mas. Manjur Kav. 126, Kel. Karet Tengsin, Kec. Tanah Abang,
Jakarta Pusat, 10220, Indonesia
TEL : 62-21-2967-5043

LG Hausys Middle East OFFICE - DUBAI
Dubai Internet City Building @3, Dubai, United Arab Emirates
TEL : 971-4-553-1452

INTERIOR FILM COLLECTION
INTERIOR FILM

2017
-
2018



interior film



www.lghausys.com

INTERIOR FILM

2017-2018 Collection



interior material

플레인 HIGH GLOSS / SOLID

Table listing various product codes (e.g., GM001, GS001, HS002) and their corresponding quantities or values.

플레인 METAL

Table listing metal product codes (e.g., ME11, MP001, MS01) and their corresponding quantities or values.

리얼 REAL

Table listing real product codes (e.g., RLT01, RLT02, RLT03) and their corresponding quantities or values.

클래식 우드 CLASSIC WOOD

Table listing classic wood product codes (e.g., PW001, PW002, PW003) and their corresponding quantities or values.

프리미엄 우드 PREMIUM WOOD

Table listing premium wood product codes (e.g., NW006, NW007, NW008) and their corresponding quantities or values.

우드 WOOD

Table listing wood product codes (e.g., CW001, CW044) and their corresponding quantities or values.

Table listing product codes (e.g., NW046, NW053, NW054) and their corresponding quantities or values.

Table listing product codes (e.g., CW432, CW437, CW438) and their corresponding quantities or values.

Table listing product codes (e.g., CW588, CW590, CW597) and their corresponding quantities or values.

Table listing product codes (e.g., DW269, DW307, DW308) and their corresponding quantities or values.

Table listing product codes (e.g., EL052, EL053, EL055) and their corresponding quantities or values.

Table listing product codes (e.g., ML31, ML41, ML42) and their corresponding quantities or values.

Table listing product codes (e.g., RS116, RS117, RS129) and their corresponding quantities or values.

네이처 크래프트 NATURE CRAFT

Table listing product codes (e.g., NC014, NC015) and their corresponding quantities or values.

네오지오 NEO GEO

Table listing product codes (e.g., NL004, NL007, NL008) and their corresponding quantities or values.

엘레이나 ELREINA

Table listing product codes (e.g., EL043, EL044, EL045) and their corresponding quantities or values.

용도별 제안 PROPOSAL

Table listing product codes (e.g., ML13, ML14, ML19) and their corresponding quantities or values.

Eco-friendly

LG Hausys interior film is an eco-friendly surface finishing material that puts the health and safety of customers as the top priority

1

Satisfaction with green certification on standards

- We manage the emission of harmful heavy metals (lead, cadmium, mercury, hexavalent chrome) and formaldehyde (HCHO) below the standard rates.

Environmental Mark Certification Criteria

Standard Below 1,000 mg/kg	Heavy metals Pb, Cd, Hg, Cr ⁶⁺
Below standards	

Standard Below 0.015 mg/m ³ .h	Formaldehyde HCHO
Below standards	

2

We minimize the emission of volatile organic compounds (VOCs, toluene).

Environmental Mark Certification Criteria

Standard Below 0.080mg/m ³ .h	Toluene Toluene
Below standards	

3

We do not use phthalate plasticizer which are toxic to humans

- Advanced countries (European nations, the United States, Japan, etc.) prohibit the use of phthalate plasticizer mainly for children's goods.
- Korea also limits the use of phthalate plasticizer for decoration materials (wallpapers, floorings) based on Korea Voluntary Safety Standards.

Phthalate Plasticizer Test Results (SGS TEST Report)

Total phthalate	Standard Below 0.1 %	UNDETECTED
DEHP		SUBMINIMUM
DBP		SUBMINIMUM
BBP		SUBMINIMUM

Flame Resistant

LG Hausys interior film is a flame resistant product for the protection of lives and property of customers from fire

(It passes the strict flame resistant test of Korea Institute of Fire Industry & Technology)

Flame resistant test standards by items & Test Result

Length of carbonization	Standard Below 20cm	TEST RESULT PASS
Extent of carbonization	Standard Below 30cm ²	TEST RESULT PASS
Afterflame time	Standard Below 3sec	TEST RESULT PASS
Afterglow time	Standard Below 5sec	TEST RESULT PASS
Smoke Density	Standard Below Max Ds=200	TEST RESULT PASS

AIR-FREE

LG Hausys interior film, an Air-Free film that prevents the formation of bubbles during the construction, extended its application to the whole group of flame resistant and non-flame resistant products.



Antibacterial

We secure excellent antibacterial effect by adding antimicrobial agent.

(Antibacterial function are applied to Premium Wood products.)

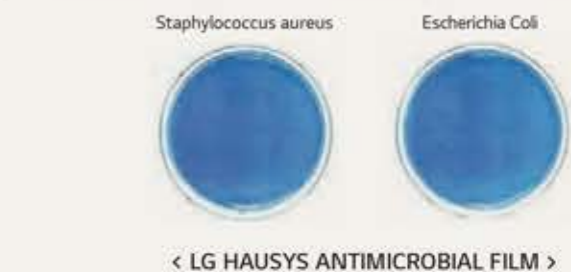
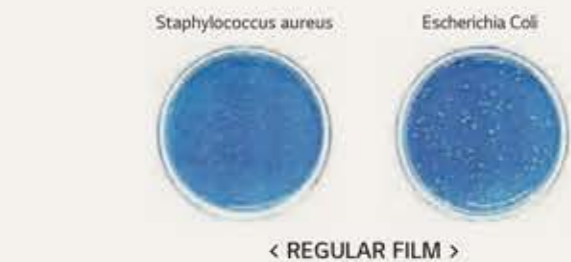
Antibacterial Test Result by FITI Testing Institute (JIS Z 2801:2010 Film adhesion method)

(Unit: Number of bacteria / cm²)

Types of bacteria		Regular Film	LG Hausys Antimicrobial Film
Staphylococcus aureus (causing food poisoning)	Initial bacterial content	1.6×10 ⁴	1.6×10 ⁴
	After 24 hours	5.3×10 ¹	< 0.63
Escherichia Coli	Initial bacterial content	1.6×10 ⁴	1.6×10 ⁴
	After 24 hours	2.4×10 ⁵	< 0.63

※ When the number of bacteria is under 0.63, the antibacterial level is 99.9%

Antibacterial TEST Picture (After 24 hours)





RWD01 N

오크 OAK



RWD02 N

시카모아 SYCAMORE



RWD03 N

지브라 ZEBRA



RWD04 N

티크 TEAK



RWD02, RWD04



RWD03, RWD04

REAL | JUST LEATHER



RLT02
N

스킨
(크림 화이트)
SKIN



RLT06
N

스킨
(라떼)
SKIN



RLT01
N

스킨
(카멜)
SKIN



RLT05
N

스킨
(레드빈)
SKIN



RLT04
N

스킨
(딥 브라운)
SKIN



RLT03
N

스킨
(탄 블랙)
SKIN

REAL | FABRIC

N
신제품
New



RVE03
N

우븐
(미스트 그레이)
WOVEN



RVE05
N

우븐
(웜 그레이)
WOVEN



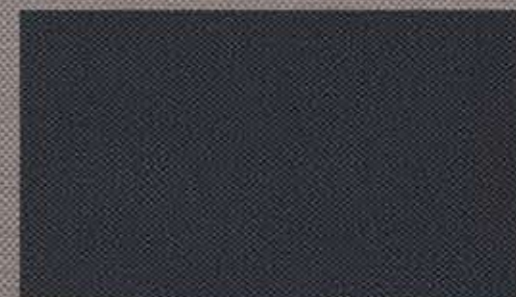
RVE06
N

우븐
(차콜)
WOVEN



RVE07
N

우븐
(모카 브라운)
WOVEN



RVE04
N

우븐
(딥 스페이스)
WOVEN



RVE03, RVE07