

LG Hausys Interior Film

LG Hausys Interior Film is designed for flat lamination and profile wrapping. With its special self-adhesive treatment, interior film is easy to apply not only on flat surface but also on irregular surface, saving time and overall cost.



Authorized distributor

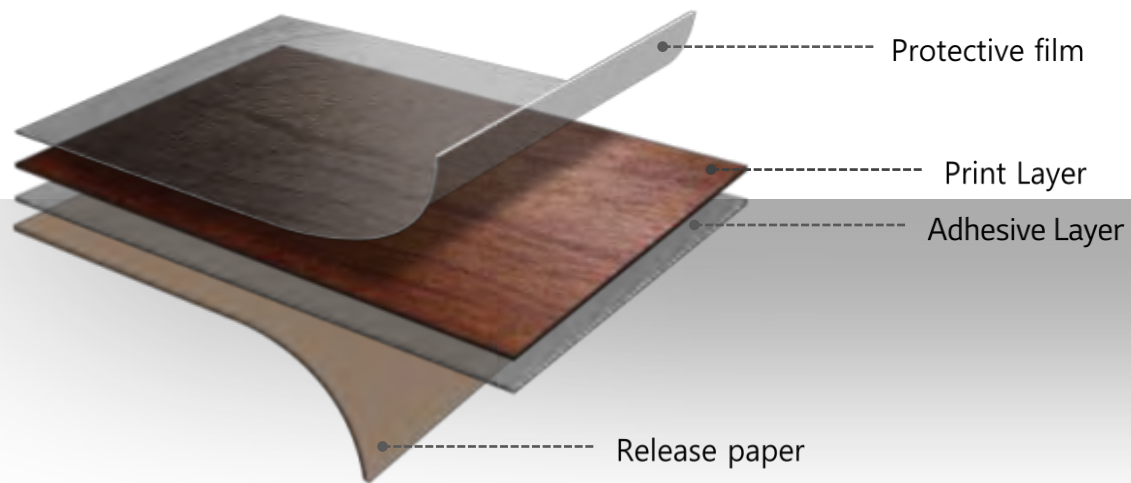
Trim USA is proud to be the sole US stocking distributor of LG Hausys' Architectural and Interior film line. Second to none in the industry, the LG Interior Film line offers over 475 options in the 2017-2018 catalog. There is truly something for every application you can dream of. As architects and designers reach new heights through discovery of innovation for buildings and upgrades, the sky continues to be the limit for these films. The possibilities for installation are endless, with options to cover walls, glass, furniture, doors, and more.

The catalog index includes High Gloss Solid Embossed and Plain films, Metals, Classic and Premium Wood, Leather, Fabric, Decorative Stone and Decorative Fancy materials. There are even Windeco/Art Canvas options for windows and glass. These glass options not only include the classic frosted alternative, but also other looks that will give your palette a unique design with textured films.

At Trim USA we pride ourselves on our knowledgeable and timely sales and customer service representatives. We look forward to helping you find the best solution for your project. These architectural films can help transform any space, old or new. Let us help you define your style and create a masterpiece! Contact us today to find out how we can assist you with a sample, product questions, and pricing. Check out the 2017-2018 PDF on our website at www.trimusa.com for a full listing of products.

What is Interior Film

LG Hausys Interior Film is.



Basic Structure

Explore new ideas for endless possibility

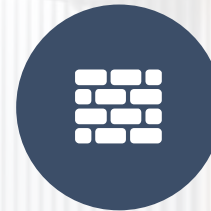
■ LG Hausys Interior film



Furniture



Door



Wall



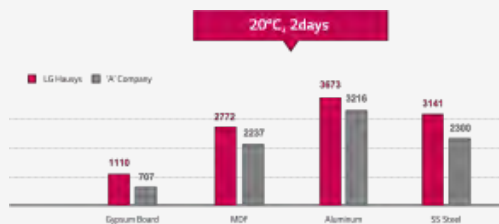
Ceiling

Essential Elements of Interior Film



Reliable Quality

very stable even when exposed to heat, humidity or low temperatures.



Fire Resistance

Fire Resistance Certification
England, Europe, China, Japan, America



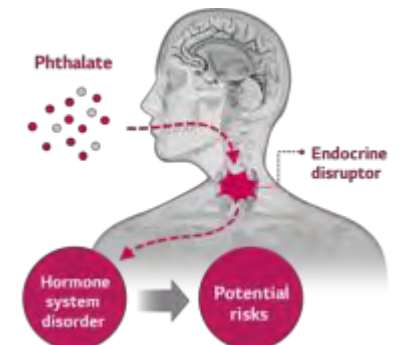
Build Ability

Ease of installation due to air free film that prevents the formation of bubbles during installation.



Eco Friendly

LG Hausys uses Heavy Metal free and 100% phthalate free plasticizers.





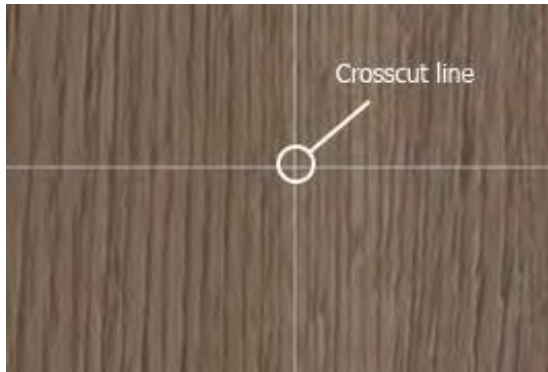
Quality specification

LG Hausys Interior film

Highly resistant to impact, abrasion and scratching.

Dimensional Stability

Measure the gap
after 2days(65°C)



Gap
within 0.3mm

Durability of Abrasion

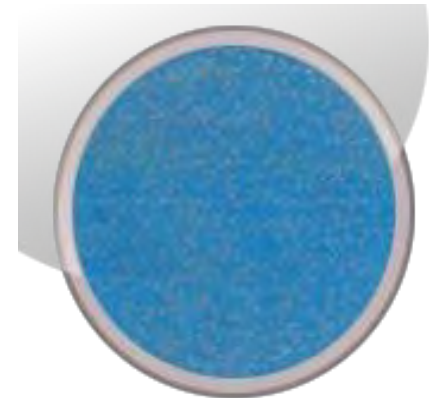
Test Standard
JIS K 7204



After 5000cycle
No Change

Antibiosis

Test Standard
JIS Z 2801



Bacillus, Staphylococcus aureus
95% sterilizing effect



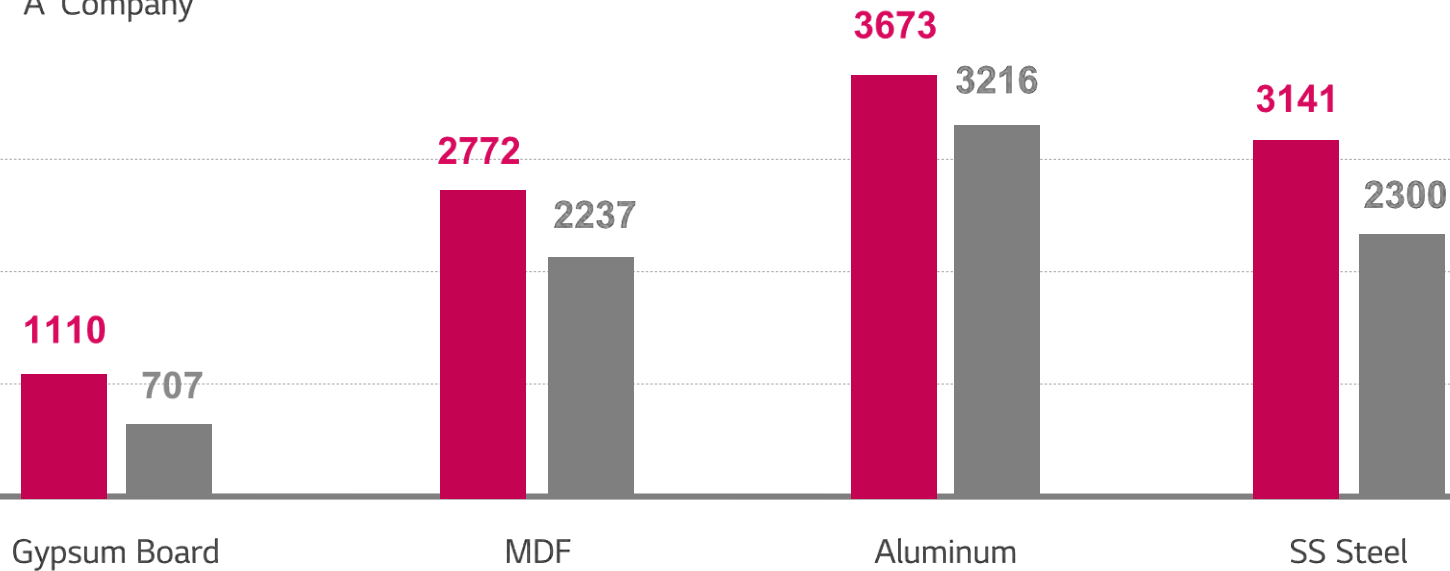
Adhesive tensile strength

■ LG Hausys Interior film ■

Adhesiveness Test with 25mm*180mm film sample under experiment environment.

40°C, 95%, 30days

■ LG Hausys ■ 'A' Company



Unit : gf

Non Phthalate & Heavy Metal Free

LG Hausys uses Heavy Metal free and 100% phthalate free plasticizers.

LG Hausys Interior film

Phthalate



**Non
Phthalate**

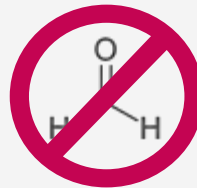
**Heavy
metals**



**Below
standard**

Below 0.5mg
/kg

**Form-
aldehyde**



**Below
standard**

Below 0.015mg
/m2.h

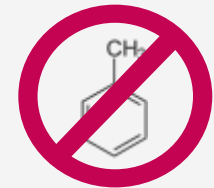
**Volatile
organic
compounds**



**Below
standard**

Below 0.4mg
/m2.h

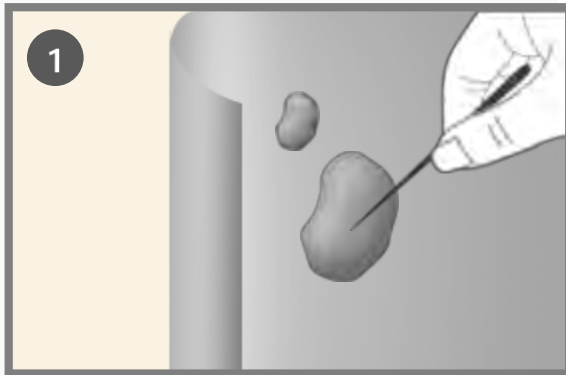
Toluene



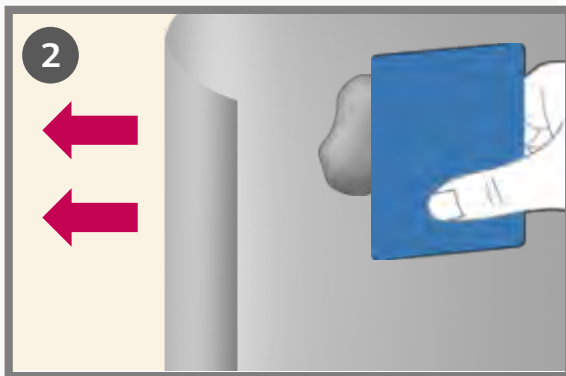
**Below
standard**

Below 0.080mg
/m2.h

No more Air-bubbles during installation



The material is designed to eliminate unsightly bubbles when installed properly by a trained applicator.



Wood Veneer VS Interior Film

Wood Veneer



Apply Veneer

Paint 2~5 Times

Interior Film



Release paper

Apply film

3 Days Application

Time

1 Day Application

Expensive

Cost

Economic

Material + Apply + Paint + Anti-flaming finish

Material + Apply

△

Fire Resistance

O

X

Customized Design


O



Fabric



Stone



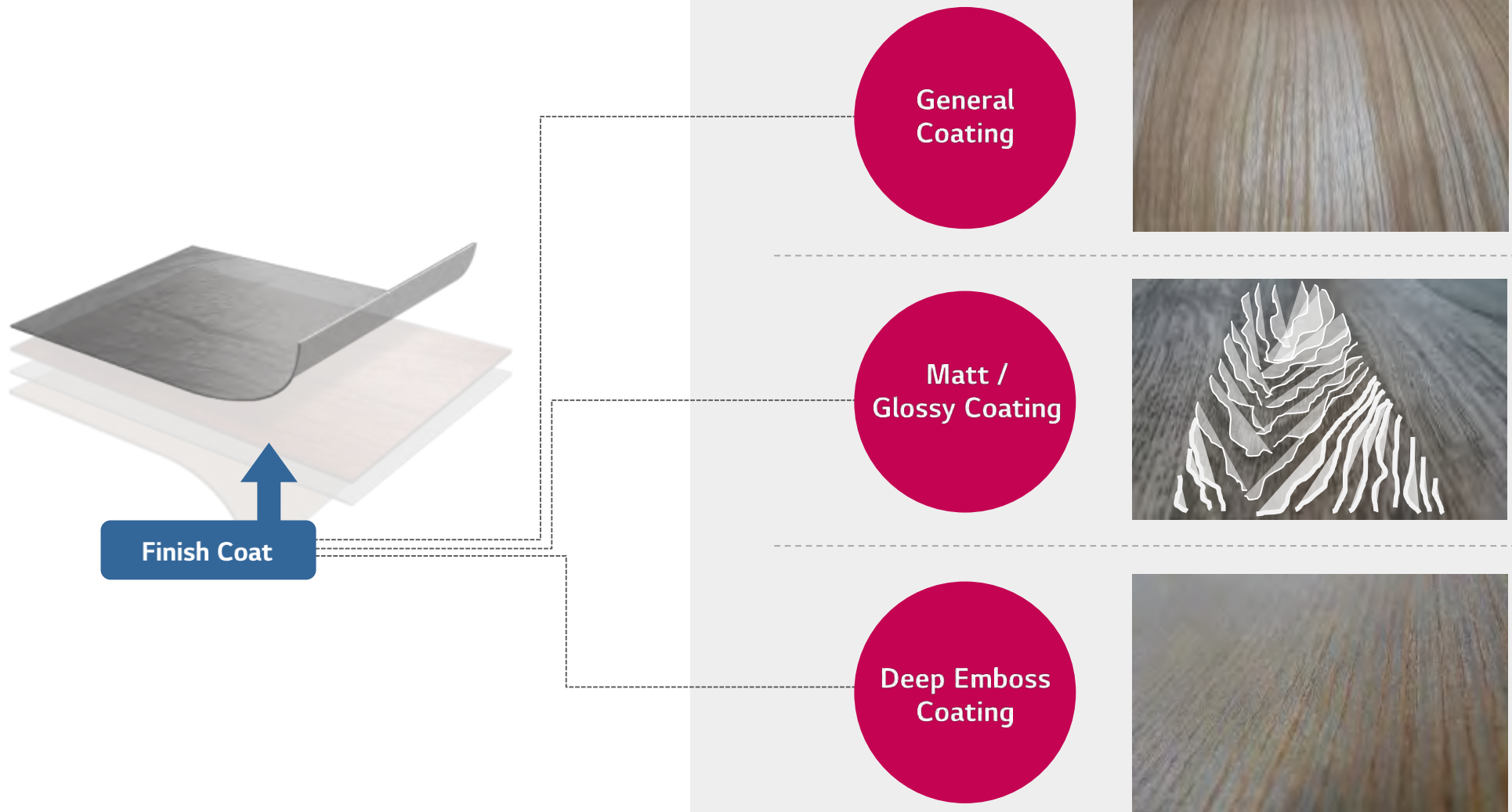
Wood



Metal

Various Effects of surface

Coating techniques for true natural wood texture



Emboss Technology

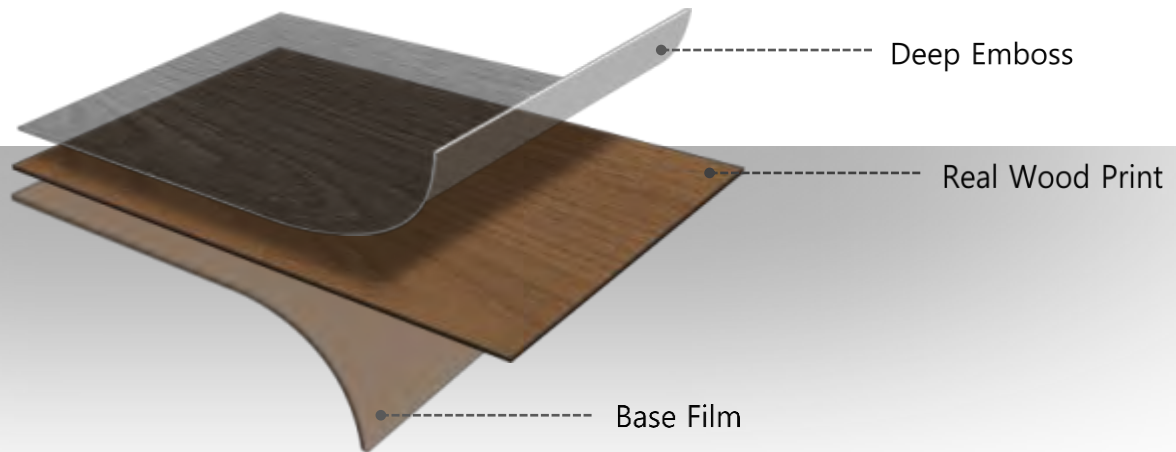
Design Excellence

Coating techniques for true natural wood texture

Produce a feeling of vivid living grain



Surface feel realistic touch of
the largest timber





www.trimusa.com

The following pages show LG Hausys Corporate Headquarter examples as well as before and after photos of projects recently completed here in the US.



U Plus Cafeteria, Korea



U-Plus, Korea

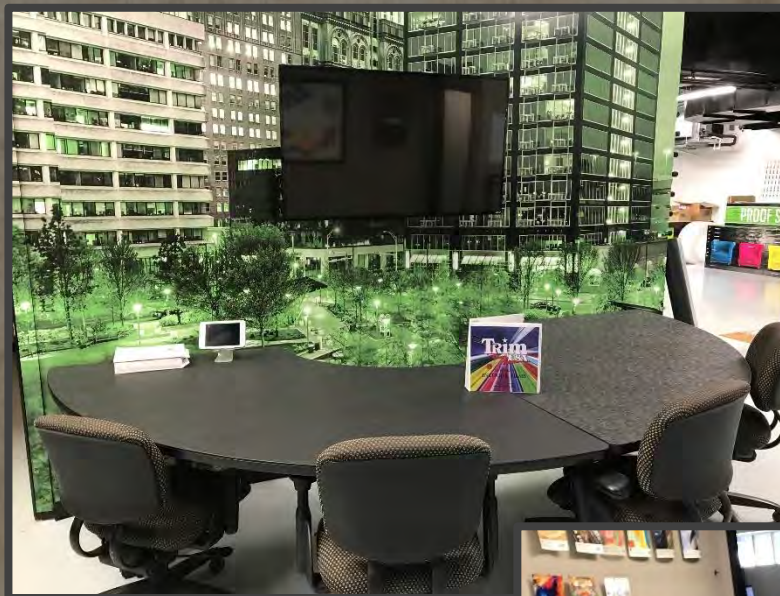
NW006



LG Hausys HQ, Korea



With the LG Hausys architectural interior line, you can cover walls, doors, tables, file cabinets and more. Above is a plain black metal file cabinet. It is covered with a Decorative Leather product number ML14 from page 56 of the catalog.



An old conference room table covered in Plain Solid Embossed film product number RS102 from page 7 of the catalog.



An accent wall in a showroom covered in Decorative Fancy product number EV119 from page 54 of the catalog.



AG Wraps transformed their new front counter and back accent wall with the Solid Concrete product number EL177 found on page 47 of the catalog.



Kitchen counter top and island makeover. The counter tops are original laminate covered with Decorative Stone product number EL178 on page 47. The center island is covered with product number CW613 found on page 40 of the catalog. *Cabinets were painted.



The wall is Decorative Stone- Solid concrete EL176 located on page 47 of the catalog and the wood accents are NW055 which is on page 27 of the catalog.



The back wall is Decorative Fancy film EL091 found on page 55 of the catalog.



The artwork on the wall is made up of the following products:
CW87 Walnut, CW441 Bamboo, DW467 Walnut, EV204 Speed, NW083 Oak, NW094 Vintage Oak

The back panel is NW055 found on page 27 of the catalog.



EV119



EL091



EV204



Trim USA
3105 Big Oaks Drive
Tobaccoville, NC 27050
800-642-0959
Chris Bowen
sales@trimusa.com

Or

Jan Clippard
jclippard@trimusa.com
864-275-2076